

## Alignment Printing Tool

### What is the printing tool?

The printing tool is a virtual printer program. It allows local printing of reports generated by PRÜFTECHNIK Alignment instruments. Using the tool, reports can be printed to any Windows printer or networked printer without disconnecting or reconfiguring the printer. This program is available on all PRÜFTECHNIK Alignment Explorer CDs and may also be downloaded from the Ludeca's website.

### Configuring the alignment instrument

To be able to print via the printing tool program, the alignment instrument must be correctly configured and then connected to the convenient PC com port.

#### **ROTALIGN® - Use with the SYS 2.711-2 cable.**

Configure ROTALIGN® as follows: Switch on the instrument and then press the 'MENU' key to access the overview. Select 'PRINTER CONFIG'. Use the up and down arrow keys to select the driver for Epson FX Series Rotacopy and confirm with 'OK'. Ensure that the printer connection is at 'COM'.

In the overview, select 'RS232 CONFIG' to set the baud rate at 9600. This is the standard setting and normally does not require to be altered. The baud rate set on the instrument must also be set on the PC.

#### **ROTALIGN® PRO (same for BORALIGN®) - Use with the SYS 2.711-2 cable.**

Switch on the instrument and use the 'More' key to navigate through the options. Select 'Device Config'. Using the arrow symbols, select the printer symbol and then the pencil symbol to select the printer driver. Select 'Epson Rotacopy' and confirm with 'OK'. The printer connection is set to 'Serial'. The baudrate is set at 9600. This is the standard setting and normally does not require to be altered. This baud rate must also be set on the PC.

#### **OPTALIGN® PLUS and MASTERLIGN® - Use with the ALI 5.221 cable.**

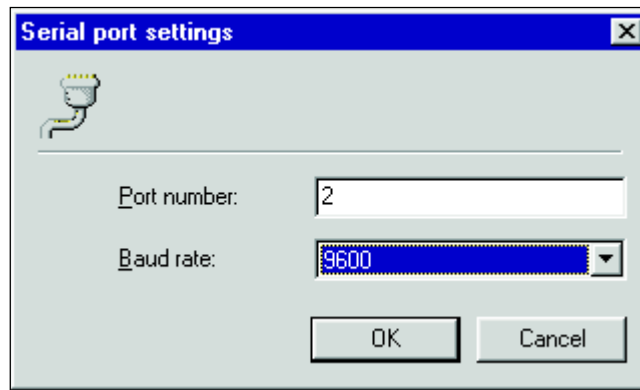
The unit requires no special configuration. The baud rate is fixed at 9600 and cannot be altered.

#### **SYSTEM2 (CENTRALIGN® and TURBALIGN®) - Use with the SYS 2.711-2 cable.**

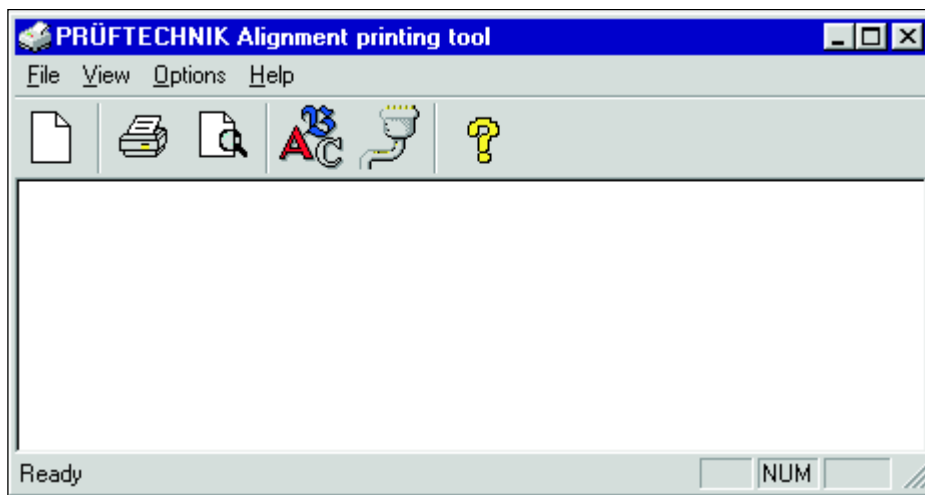
Select menu point 'Config' in the opening screen. The printer parameters should be set to 'External' or 'Epson'. A baud rate of either 9600 or 19200 should be selected. Note that the baud rate set on the instrument must also be set on the PC.

## Quick Start

1. With the respective alignment instrument connected to any convenient PC com port and the program started directly from a disk or CD or from the location in which it has been installed. The 'Serial port settings' dialog window opens.



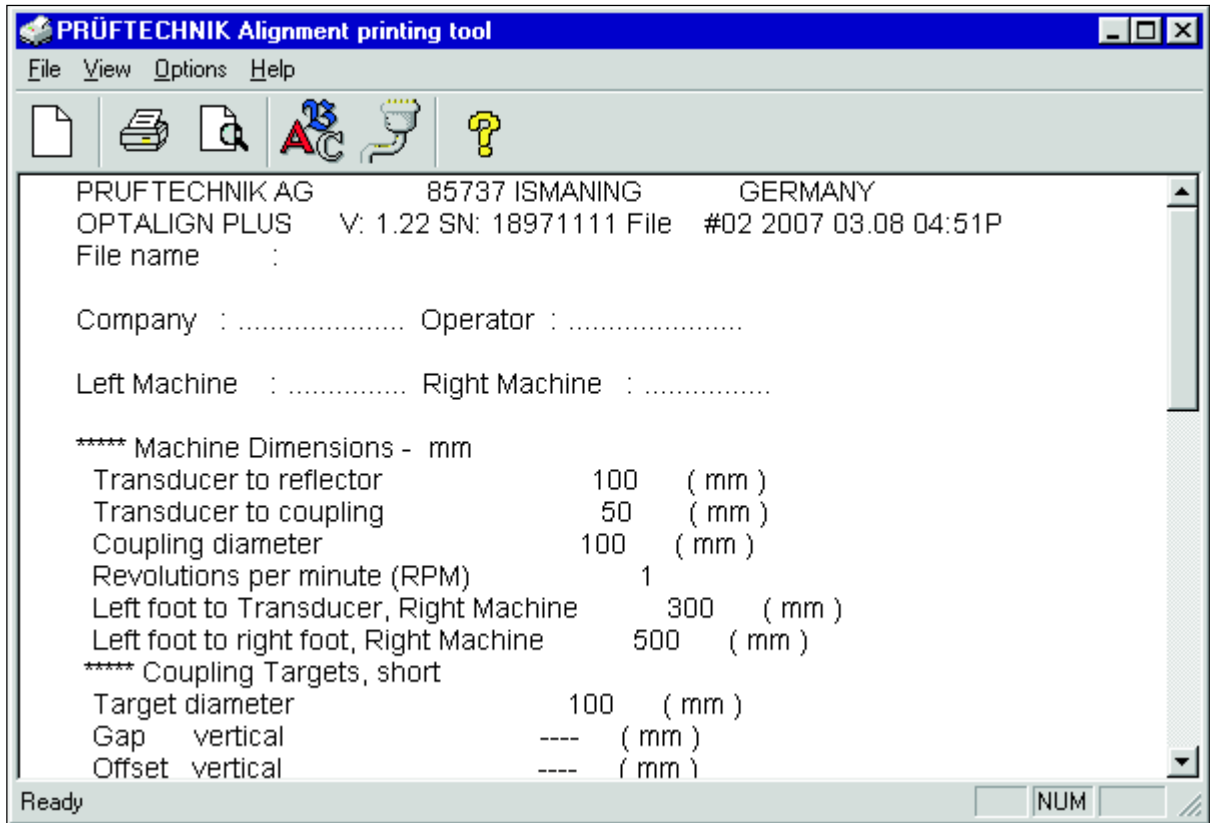
2. Under 'Port number' type in the com port in use. Under 'Baud rate', select the appropriate baud rate. For OPTALIGN® PLUS, MASTERLIGN®, ROTALIGN® PRO (BORALIGN®) and ROTALIGN®, select a baud rate of 9600. For SYSTEM2 set baud rate at either 9600 or 19200.
3. Click 'OK' to confirm entry. The printing tool dialog window opens.




4. With respective instrument connected directly to the computer, activate the instrument print function to review the report to be printed.
  - For ROTALIGN® press the instrument 'MENU' key and then select 'Report' to review report to be printed.
  - For ROTALIGN® PRO press the instrument 'MENU' key and then select 'Report' and the printer icon to review report to be printed.
  - For OPTALIGN® PLUS and MASTERLIGN® press the 'open file' icon on the control unit. Enter the file number to be opened and then press 'ENT'. Press the printer icon to review report to be printed.

- For SYSTEM2 press the printer icon to review report to be printed.

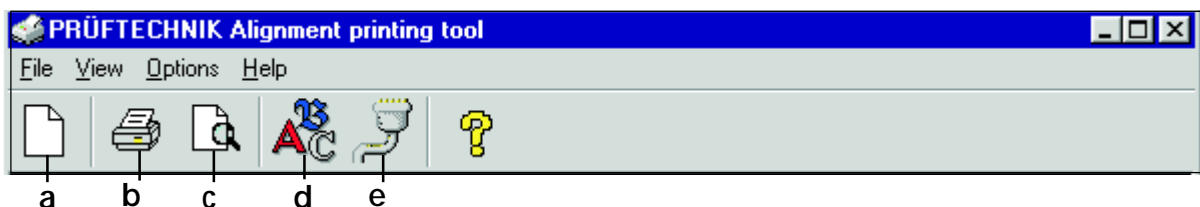
The dialog window shown below shows the preview of an OPTALIGN® PLUS file in the text mode.



5. Print report by selecting 'File' and then 'Print' or by clicking , the printer icon.

## The toolbar

The toolbar provides shortcuts to the commonly used commands.



- used to clear old page and connect new ones
- used for the print function
- used to review pages before printing
- used to edit fonts
- used to set com port