

Cardan Shaft Alignment (U-Joint)

Voelzow & Company, Inc.

4804 Lawyers Rd E • Wingate, NC 28174

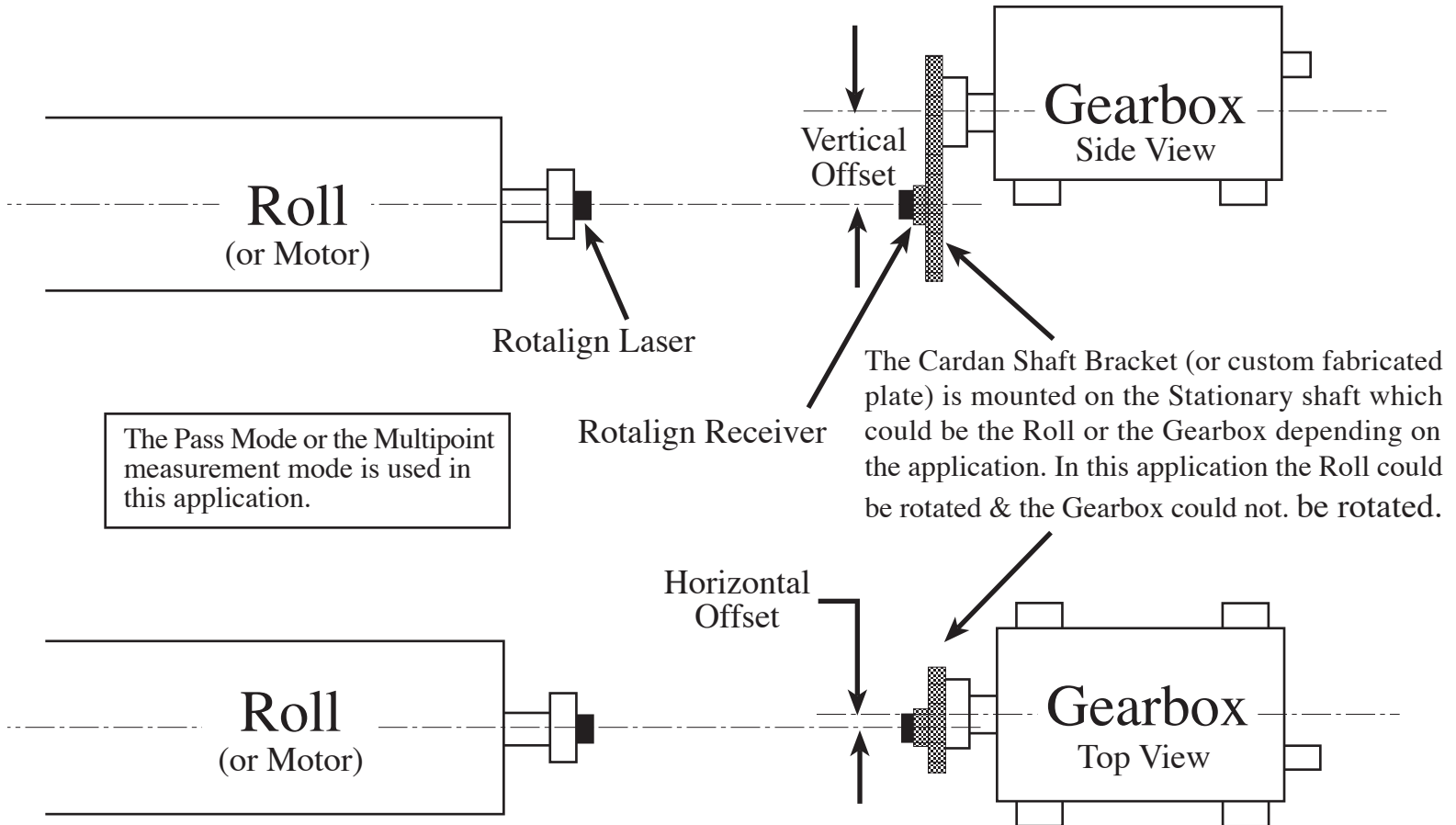
704-233-9222 • Fax 704-233-9211

E-mail: nvoelzow@perigee.net

Web: www.LaserAlignment.net

Rotalign® System (Reverse Mounted)

by Norm Voelzow



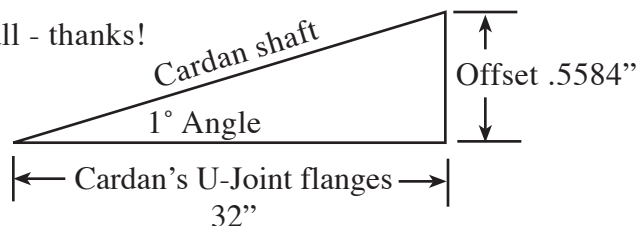
Note: This sketch depicts typical Horizontal & Vertical Offsets. The Cardan (U-Joint) Shaft OEM (Original Equipment Manufacturers) generally recommend that the Roll & Gearbox Centerlines be Parallel to each other with no Angularity between the Centerlines. The angle that the OEM generally specifies is the angle of the Cardan shaft itself.

The math is as follows: Multiply the length between Cardan's U-Joint flanges times the Tangent of the Angle required.

For example: We have a 32" long span and the required angle is 1°. From the table below the Tangent of 1° is 0.01745. So we multiply 32" times 0.01745 which equals .5584" offset!

If you have any questions please call - thanks!

Norm Voelzow



Angle Tangent

1° = 0.01745

2° = 0.03492

3° = 0.05241

4° = 0.06993

5° = 0.08749

6° = .010510

May 1, 2007

