

EZTHERM



THE EZ ANSWER

Voelzow & Company, Inc.

P.O. Box 0158 • Wingate, NC 28174
704-233-9222 • Fax 704-233-9211
E-mail: voelzow@perigee.net
Web: www.LaserAlignment.net

 **Electrophysics™**

EZ THERM

PROFESSIONAL GRADE PERFORMANCE, PORTABILITY, PRICED RIGHT!

Introducing EZ Therm from Electrophysics, a high performance, full feature thermography system designed for predictive maintenance professionals. EZ Therm incorporates a high resolution 320x240 (76,800 pixel!) uncooled focal plane array, accurate temperature measurement, integrated visible flash camera, digital image recording and the power of an integrated PDA.

Breakthrough Price

The unrealized promise of solid state sensor cost savings has finally arrived! EZ Therm incorporates the same advanced uncooled focal plane array technology found in demanding automotive and military systems. EZ Therm takes full advantage of the first high volume uncooled focal plane array production line to make thermographic cameras truly affordable. Compare EZ Therm's extensive list of standard features including a mega pixel visible flash camera and best in class image quality with systems costing up to three times more! EZ Therm is the new value standard in thermographic instrumentation.



EZ to Use

Pick up an EZ Therm and see how quickly it's intuitive user interface enables fast identification, analysis and reporting a wide range of thermal anomalies. The super bright front illuminated LCD display angle is continuously adjustable facilitating inspecting inspection of objects at floor level and overhead in both direct sunlight and typical in-plant lighting conditions. In addition the LCD display ensures operator compliance with NFPA regulation 70E when performing high voltage electrical inspections.

EZ THERM - BEST IN CLASS VALUE

FEATURES

High Resolution Image Sensor - 76,800 Pixels

Mega Pixel Visible Flash Camera

Integrated iPAQ PDA

Wide Temperature Range

Comprehensive Temperature Analysis

Electronic Zoom

Automatic Gain Control

Voice And Text Annotation

Lightweight Ergonomic Camera Body

Standard Camcorder Batteries

Windows® Mobile 2003 Operating System

Lowest Cost High Resolution Camera Available

BENEFITS

400% Better Resolution Over 160x120 Array Cameras

Capture High Resolution Images In All Lighting Conditions

Daylight Readable LCD, CF Expansion Port, Touch Screen Interface. Wi-Fi File Transfer (Optional)

Measure Objects Up To 1000°F

Perform Analysis In The Field

Increase Magnification Up To 16X

Auto Range With One Button Press

Capture Field Comments In The Camera

EZ To Use And Comfortable To Hold

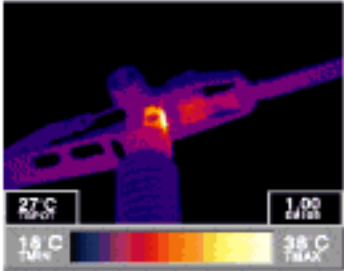
EZ To Find At Your Local Electronics Store

Take Full Advantage Of Microsoft® Applications And PC Connectivity

EZ To Purchase - Reliability Assured

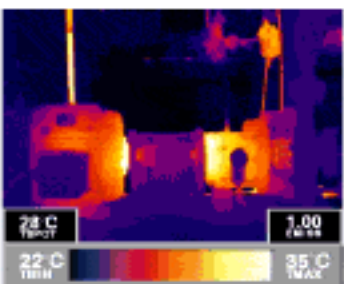
THERMOGRAPHY APPLICATIONS

High resolution real-time thermal imaging is a powerful diagnostic tool for a wide range of applications. Featuring thousands of measurement points, EZ THERM delivers outstanding image quality and powerful analysis functionality both in the field as well as on your PC. EZ THERM incorporates the same thermal imaging technology found in demanding military and automotive programs ensuring reliable operation over many years of service.



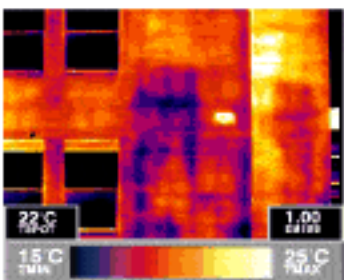
Electrical Inspection

Survey a wide variety of electrical apparatus to identify hot spots and quantify their severity. Capture both high definition thermal and visible image images and easily create comprehensive fault reports enabling you to schedule repairs using a managed program.



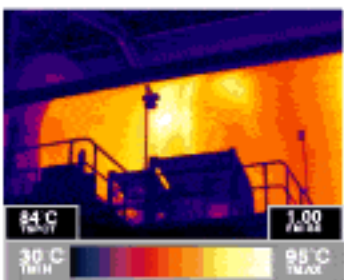
Mechanical Inspection

Inspect motors, pumps, bearings, cooling lines and other mechanical systems for suspect thermal conditions that are typically a predictor of future problems. Keep records of mechanical systems over time and determine trends and develop service programs to restore systems to health.



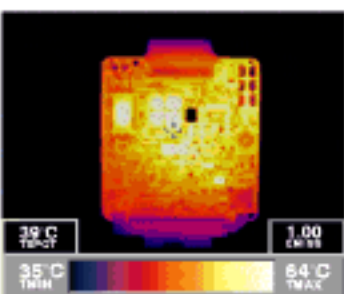
Roofing and Building Inspections

Inspect roofs for moisture ingress quickly and safely with infrared. Inspect building insulation for energy optimization and check refrigeration compartments for energy leaks. Check storage tanks for material levels.



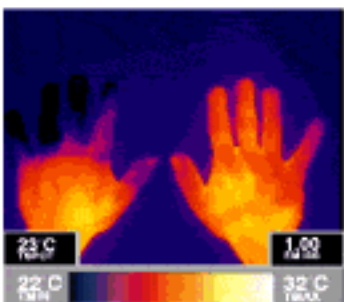
Process Monitoring

Scan critical refractory linings in a wide variety of refractory systems in kilns and petrochemical processing. Inspect continuous processes like paper making for temperature related problems using thermal imaging at safe distances.



Product Development

Analyze the thermal performance of components such as electronics, power supplies, heat sinks, conductors and many others. With tens of thousands of measurement points, thermographic analysis speeds up product development cycles and reduces costs.



Medical

Monitor the physiological attributes of persons in real-time with high resolution imagery and accurate temperature measurement. Wirelessly transmit images to a host PC for analysis or to a data base for future statistical analysis.





Integrated iPAQ PDA

Enjoy the best display available, a touch screen interface, direct function button controls and host of expansion options. It's such a clever idea its obvious.



Voice Recording

Record voice notes with no time limit. Playback recording within reports or use notes to recall site specific details. All files are named using the query keyboard eliminating cryptic file names.



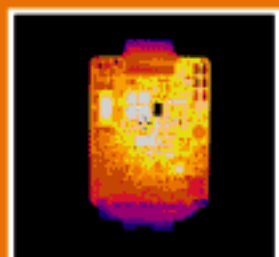
Articulating Display

The continuously adjustable display angle makes floor level and overhead inspection points more comfortable and safer to view.



35mm Lens with Close Focus

The high quality lens delivers outstanding image quality, precise focus control and enables focus as close as 12 inches.



Uncooled High Resolution Sensor

EZ Therm features a high resolution sensor with over 76,000 pixels. Compare with other systems offering only 19,000 pixel sensors. There's simply no substitute for pixel density.



Ergonomic Camera Body

Weighing just 4 lbs. the camera's ergonomically design body features a comfortable hand grip and viewfinder with adjustable viewing angle.



ACCESSORY PORT ADDS VERSATILITY

SD Memory Cards

Quickly add memory to EZ THERM with SD media cards. The standard 32MB card stores over 300 images. Cards up to 1GB are available at your local electronics retailer



CF Memory Cards

Quickly add memory to EZ THERM with CF media cards. CF memory card area available at your local electronics retailer. Cards up to 1GB are available at your local electronics retailer



Visible Camera Card

Simply plug in the EZ Therm's 1.3 mega pixel camera and take high resolution images. The built in flash is ideal for plant apparatus picture taking and PocketIR camera control interface makes picture taking EZ.



Wireless Network Card

Get connected. Download images through your wireless network quickly without dealing with . While running your own PDA applications check email.



Automatic Image Control (AGC)

Automatically set the range and level of the image based on scene temperatures. Select continuous image scaling or snap shot AGC image adjustment.



Standard Camcorder Batteries

Never pay outrageous prices for proprietary batteries again. Need more power? Go into any electronics store and pick up more power - Cheap! EZ Therm runs over 2 hours on a single battery.



REPORTIR - EZ TO CREATE GREAT REPORTS

ReportIR works seamlessly with PocketIR to make report preparation quick and simple. Using Word or other Office application you have complete flexibility over report layout of images text fields company logos and other graphical elements. Create templates featuring thermal and visible images, analysis results, field observations and recommended service. The 12-bit images can be analyzed and optimized within ReportIR rendering field analysis less complicated.



EZ THERM SPECIFICATIONS

Thermography Camera ▼		User Interface ▼	
IR Sensor Type	Uncooled BST Focal Plane Array	Camera	4 button panel
Resolution	320 x 240 (76,800 pixels)	Display	Touch screen, 5-axis button, dedicated function buttons
Pixel size	48.5 ² μ	Data Logger ▼	
Digitization	12-bit	Image Storage	32 mByte SD, iPAQ 64 mByte Memory
Frame rate	30 Hz	Storage capacity	350 images
Field of view	25'x18'	File formats	.fts (12-bit), .jpg, .wav (voice file)
Minimum focus	12"	File naming	Query keyboard input
Thermal sensitivity	0.08°C	Operating System	Microsoft Windows Mobile 2003
Spectral response	8-12 microns	Measurement ▼	
Focus	Manual	Temperature range	-20° to 500°C
Palettes	4 color, 2 grayscale	Accuracy	± 2% or 2% C which ever greater
Zoom	2, 4, 8, 16X (electronic)	Automatic emissivity correction	Variable from 0.1 to 1
Image Averaging	2, 4, 8, 16 frames	Measurement Corrections	Background temp , ambient temp.
Automatic Gain Control (AGC)	Continuous and momentary	Measurement spot size	320:1
Video	NTSC or PAL	Operation ▼	
Visible Camera ▼		Battery	NIMH Camcorder battery
Sensor type	1.3 Mega Pixel CMOS	Operating Time	> 2hours/battery
Low light compensation	Flash	Operating Temperature	-20° to 50°C
Image Presentation ▼		Storage Temperature	-20° to 60°C
Flat panel display type	Transreflective LCD	Physical ▼	
Size	2.25 x 3 (3.8" diagonal)	Weight	4.3 lbs (w/LCD, battery)
Color	64K colors	Dimensions	9"L x 5.5"W x 6"H
Viewfinder	B/W CRT with focusable ocular	Environmental	Splashproof (IEC pub. 529 IPX4)
Visible/IR	IR only/Visible only/PIP	Certifications	CE



Electrophysics Corp. 373 Rte 46 Fairfield, NJ 07004
 973-882-0211 973-882-0997 (fax) Info@electrophysics.com
 Visit us at : www.electrophysics.com

