

INSTRUCTIONS FOR PRINTING TOOL WITH ROTALIGN® PRO THROUGH THE SERIAL-TO-USB ADAPTER BRIDGE

These instructions are meant to facilitate connection between a Rotalign Pro instrument and a PC that does not have a serial port but does have a USB port.

- 1) Install Serial to USB Adapter driver software on your PC¹ from the CD-Rom supplied with the adapter cable.
Note: We recommend part number L 621 for this. Alternatively, you can use brand IO Gear, model # GUC232-A, or Radio Shack model #26-183.
- 2) Connect your SYS 2.711-2 PC Cable to the serial port on your Rotalign Pro. Plug the L 621 Serial-to-USB Adapter cable into the other end of the SYS 2.711-2 PC Cable. Now plug the USB end of the L 621 Adapter cable into the USB port of your PC.
- 3) Turn on your Rotalign or Rotalign Pro. Go to Device Config, then Printer Config, and select the Epson Rotacopy driver, and make sure you have the COM port selected (COM, not LPT should show in the status line at the top of the screen.) See Figure 1.



**Lu-deca Part No. L 621
Serial-To-USB Adapter Bridge**

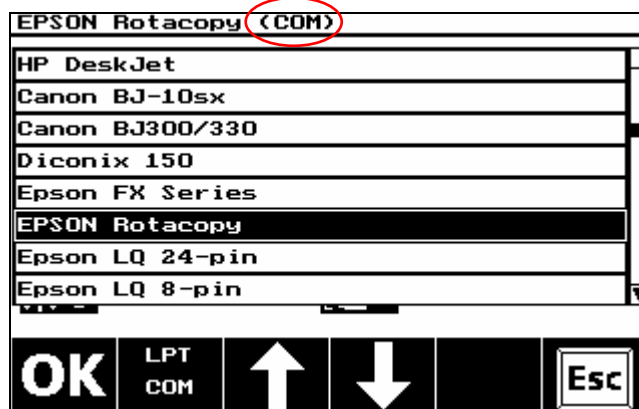


Figure 1

- 4) Turn OFF your Rotalign and Turn it On again.
- 5) Download the **Printing Tool** utility to your desktop from our website at:
<http://www.lu-deca.com/downloads.htm#PRINTING%2OTOOL>
*Note: You **do not** need Admin rights to your PC to do this! You can then run the utility directly from your desktop by double-clicking it. It does not need to be installed.*
- 6) On your PC, go to **Control Panel/System/Hardware/Device Manager/Ports** and find your USB to Serial Bridge (see Figure 2.) You need to set the Com port for it to any available port from **1 to 4**. (Note the example in Figure 2 is set to Com port #2.)

¹ You need full Admin rights to your PC to do this! See Appendix A on page 5 for detailed installation instructions.

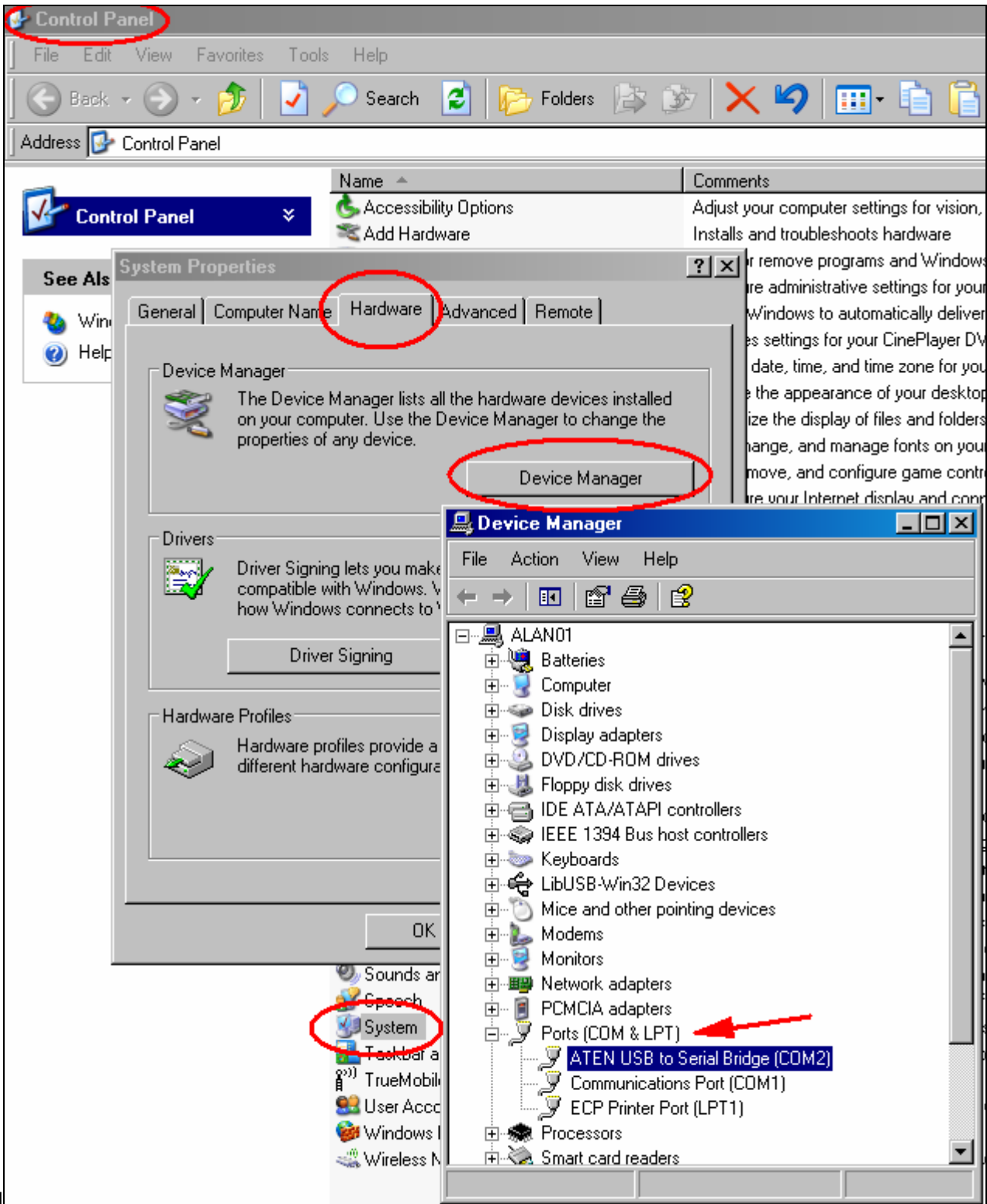


Figure 2

If not already set to one of these ports, change it by right-clicking on the highlighted bridge name, click Properties, then click the Port Settings tab, then click Advanced and change the Com Port Number in the drop down window.²

- 7) Start the Printing Tool by double-clicking the icon on your desktop. The Serial Port Settings window will open first. See Figure 3.

² You need full Admin rights to your PC to do this!

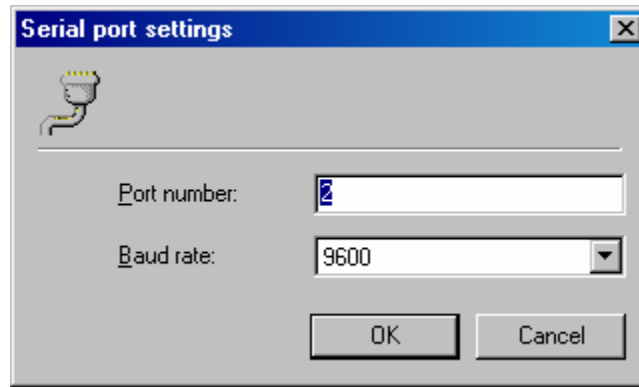



Figure 3

(If the Serial Port Settings window does not open, and instead the Printing Tool Window opens directly, you can always access the Serial Port Settings window by clicking the  button.) Set the Serial Port to the correct one that your Serial-to-USB Adapter bridge is set to, and click OK.

8) Now the Printing Tool window will open. See Figure 4.

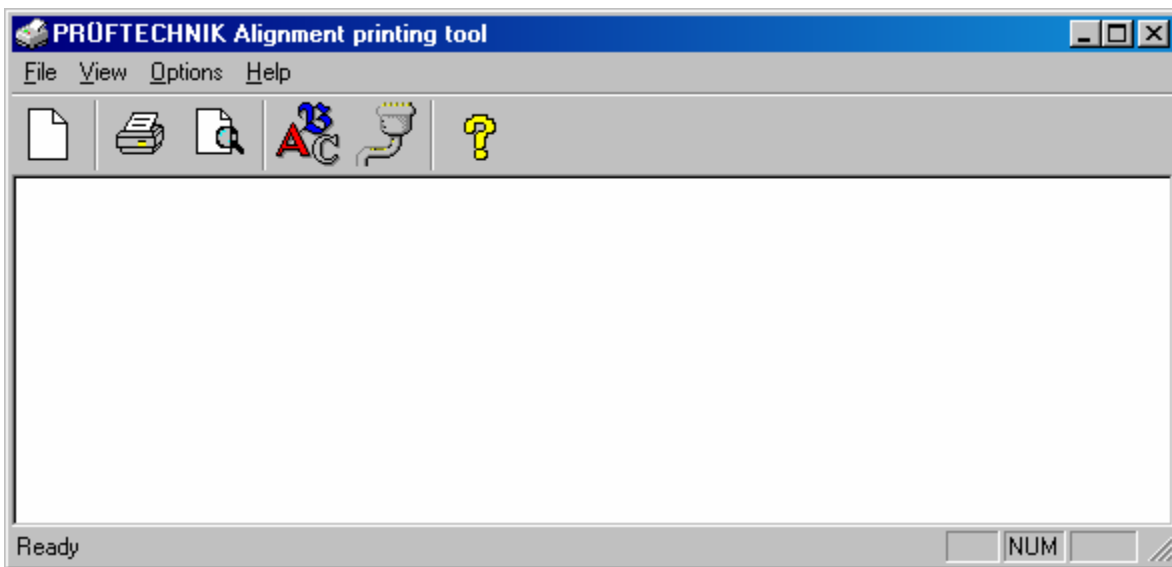


Figure 4

9) Open the file you want to print in your Rotalign, select type of report you want and

click the  soft key. See Figure 5.

The report from your Rotalign will appear in the Printing Tool window.³

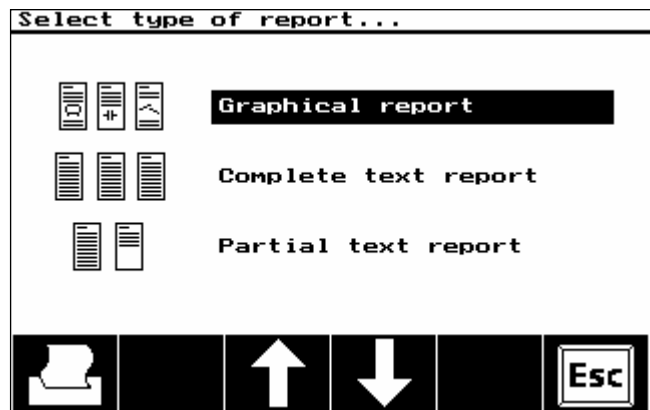



Figure 5

³ If strange characters or gobbledygook appears in the Printing Tool window when you do this, your serial port configuration settings in the Rotalign Pro may be incorrect. See Appendix A for instructions on how to correct.




- 10) Now print your report from the Printing Tool window using the  key. (You can change printers with Print Setup under the File menu in the Printing Tool Window.)

*Note 1: You **do not** need Admin rights to your PC to do this! You can instead run the utility directly from your desktop by double-clicking it. It does not need to be installed.*

Note 2: If strange characters or gobbledygook appears in the Printing Tool window when you performed Step #9, your serial port configuration settings in the Rotalign Pro may be



incorrect. To correct, press , then select Device Config and select Printer Interface. (See Figure 6.)

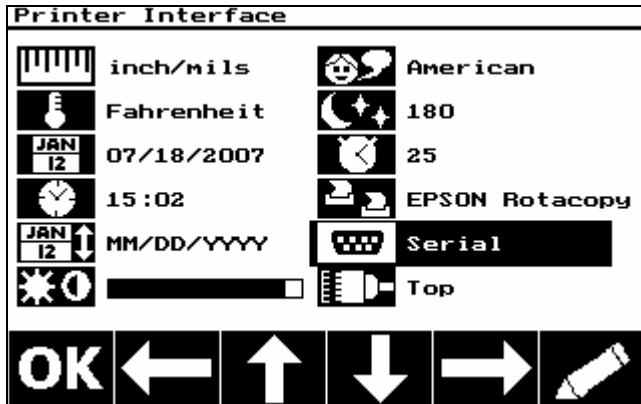


Figure 6

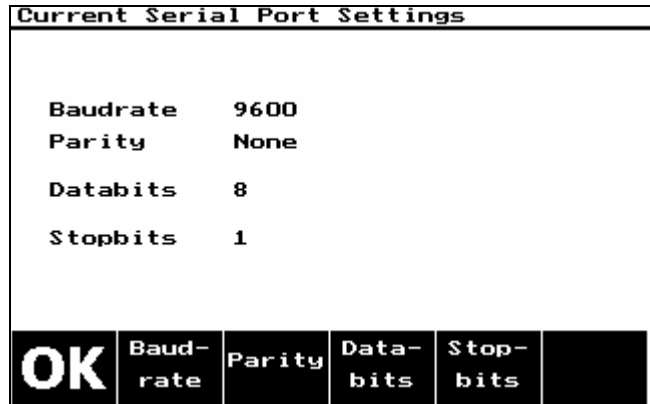





Figure 7

Press the  softkey, once or twice as necessary, until the screen in Figure 7 appears. Set the parameters as shown. Confirm with  and return to Step 9. 

APPENDIX A

SOFTWARE INSTALLATION INSTRUCTIONS

L 621 or IOGEAR #GUC232A USB-TO-SERIAL ADAPTER

Requirements:

Microsoft Windows 2000, Millennium, and 98SE, 2000, or XP, and a USB port.

Instructions:

- 1) Insert the IOGEAR Installation CD-ROM into your computer.
- 2) You will see the README for the IOGEAR installation CD-ROM.
- 3) After you click Continue, you will be presented with the End User Agreement of the IOGEAR USB to Serial Adapter. Once you have finished reading, you may select "I accept the terms in this License Agreement" if you wish to continue the installation procedure.
- 4) You will now begin the installation procedure. Click "Start".
- 5) The installation procedure will begin.
- 6) Once you have finished installing the drivers for your IOGEAR USB to Serial Adapter, plug in your L 621 or IOGEAR USB-to-Serial Adapter to complete installation.
- 7) Once you plug-in the adapter, Windows will say that it has found a USB/Serial Controller.
- 8) Now Windows will tell you that New Hardware has been found. Click Next.
- 9) Windows will now ask you if you wish to search for the device driver.
- 10) Select "Search for suitable device driver for my device (recommended)" then click Continue.
- 11) Windows will now ask you to insert the Manufacturer's driver disk into the CD-ROM.
- 12) Type in: C:\IOGEAR GUC232A, then click OK
- 13) Windows will now tell you that a device driver has been found. Click Next
- 14) Windows will now tell you that the device driver installation has been completed. Click Finish.

Optional:

Once you have completed the installation, you're probably going to want to know what COM port your IOGEAR USB to Serial Adapter is installed as.

- 15) Open Device Manager by right-clicking on the My Computer icon on your desktop, then click Properties.
- 16) Select the Device Manager tab.
- 17) Click the Device Manager button. You will see the Device Manager of your computer. The (COM4) represents which Communications Port your IOGEAR USB to Serial Adapter is assigned to. ATTENTION! - Windows 2000 & XP Users: You may change this by double-clicking the IOGEAR USB-to-Serial Bridge (COM4) in the Device Manager; Select Port Settings, and click the Advanced button. The COM Port # will change to whatever address you select, then click OK. However, if you unplug and then plug the IOGEAR USB to Serial Adapter into any other USB port on your computer, this COM Port # *may* change. Leave the adapter in the USB port you originally installed it in, so that the COM Port # will stay the same. ☐